



Contents

1. Important Safety Instructions.....	2
2. Package Contents and Technical Specifications.....	4
2.1 Package Contents	4
2.2 Specifications	4
2.3 Product Diagram.....	5
3. Operating and Programming.....	7
3.1 Notes Before Cleaning	7
3.2 Quick Start.....	8
3.3 Cleaning Mode Selection.....	11
3.4 Programming the Robot	12
3.5 Optional Mopping System	13
3.6 Alarm Indicator Light and Sounds	15
4. Maintenance.....	16
4.1 Dust Bin and Filters	16
4.2 Microfiber Cleaning Cloth and Mopping System	17
4.3 Main Brush and Side Brushes.....	18
4.4 Other Components	19
4.5 Regular Maintenance	20
5. Troubleshooting	21



1. Important Safety Instructions

When using an electrical appliance, basic precautions should always be followed, including the following:

READ ALL INSTRUCTIONS BEFORE USING THIS APPLIANCE.

SAVE THESE INSTRUCTIONS

1. This appliance is not intended for use by persons (including children) with reduced physical, sensory or mental capabilities, or lack of experience and knowledge, unless they have been given supervision or instruction concerning use of the appliance by a person responsible for their safety.
2. Children should be supervised to ensure that they do not play with the appliance.
3. Clear the area to be cleaned. Remove power cords and small objects from the floor that could entangle the Appliance. Tuck rug fringe under the rug base, and lift items such as curtains and tablecloths off the floor.
4. If there is a drop off in the cleaning area due to a step or stairs, you should operate the Appliance to ensure that it can detect the step without falling over the edge. It may become necessary to place a physical barrier at the edge to keep the unit from falling. Make sure the physical barrier is not a trip hazard.
5. Only use as described in this manual. Only use attachments recommended or sold by the manufacturer.
6. Please make sure your power supply voltage matches the power voltage marked on the Charging Dock.
7. For INDOOR household use ONLY. Do not use the Appliance in outdoor, commercial or industrial environments.
8. Use only the original rechargeable battery and Charging Dock provided with the Appliance from the manufacturer. Non-rechargeable batteries are prohibited. For battery information, please refer to Specifications section.
9. Do not use without dust bin and/or filters in place.
10. Do not operate the Appliance in an area where there are lit candles or fragile objects.
11. Do not use in extremely hot or cold environments (below -5°C/23°F or above 40°C/104°F).
12. Keep hair, loose clothing, fingers, and all parts of body away from any openings and moving parts.
13. Do not operate the Appliance in a room where an infant or child is sleeping.
14. Do not use Appliance on wet surfaces or surfaces with standing water.
15. Do not allow the Appliance to pick up large objects like stones, large pieces of paper or any item that may clog the Appliance.
16. Do not use Appliance to pick up flammable or combustible materials such as gasoline, printer or copier toner, or use in areas where they may be present.
17. Do not use Appliance to pick up anything that is burning or smoking, such as cigarettes, matches, hot ashes, or anything that could cause a fire.
18. Do not put objects into the suction intake. Do not use if the suction intake is blocked. Keep the intake clear of dust, lint, hair, or anything that may reduce air flow.
19. Take care not to damage the power cord. Do not pull on or carry the Appliance or Charging Dock by the power cord, use the power cord as a handle, close a door on the power cord, or pull power cord around sharp edges or corners. Do not run Appliance over the power cord. Keep power cord away from hot surfaces.
20. If the power cord is damaged, it must be replaced by the manufacturer or its service agent in order to avoid a hazard.
21. Do not use the Charging Dock if it is damaged.



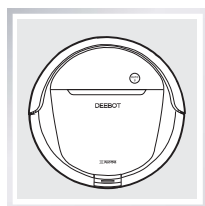
1. Important Safety Instructions

22. Do not use with a damaged power cord or receptacle. Do not use the Appliance or Charging Dock if it is not working properly, has been dropped, damaged, left outdoors, or come in contact with water. It must be repaired by the manufacturer or its service agent in order to avoid a hazard.
23. Turn OFF the power switch before cleaning or maintaining the Appliance.
24. The plug must be removed from the receptacle before cleaning or maintaining the Charging Dock.
25. Remove the Appliance from the Charging Dock, and turn OFF the power switch to the Appliance before removing the battery for disposal of the Appliance.
26. The battery must be removed and discarded according to local laws and regulations before disposal of the Appliance.
27. Please dispose of used batteries according to local laws and regulations.
28. Do not incinerate the Appliance even if it is severely damaged. The batteries can explode in a fire.
29. When not using the Charging Dock for a long period of time, please unplug it.
30. The Appliance must be used in accordance with the directions in this Instruction Manual. ECOVACS ROBOTICS cannot be held liable or responsible for any damages or injuries caused by improper use.
31. The robot contains batteries that are only replaceable by skilled persons. To replace the robot's battery, please contact Customer Service.
32. If the robot will not be used for a long time, power OFF the robot for storage and unplug the Charging Dock.
33. WARNING: For the purposes of recharging the battery, only use the detachable supply unit CH1465A provided with this appliance.
34. The Remote Control pre-installs two non-rechargeable AAA batteries. To replace the battery of the Remote Control, please turn over the Remote Control, press and remove its Battery Cover. Remove the batteries, and insert the new batteries with the correct polarity. Reassemble the Battery Cover.
35. Non-rechargeable batteries are not to be recharged.
36. Different types of batteries or new and used batteries are not to be mixed.
37. Batteries of the Remote Control are to be inserted with the correct polarity.
38. Exhausted batteries are to be removed from the Appliance and safely disposed of.
39. If the Remote Control is to be stored unused for a long period, the batteries should be removed.
40. The supply terminals are not to be short-circuited.

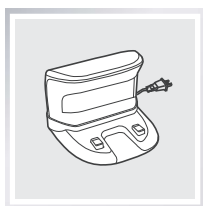


2. Package Contents and Technical Specifications

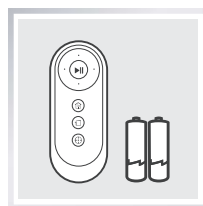
2.1 Package Contents



Robot



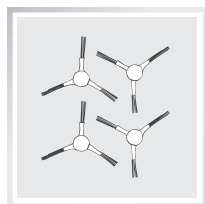
Charging Dock



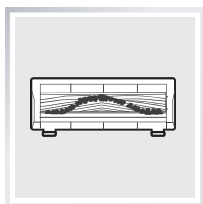
Remote Control with
Batteries



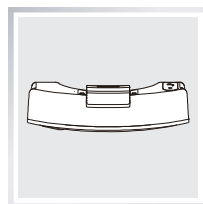
Instruction Manual



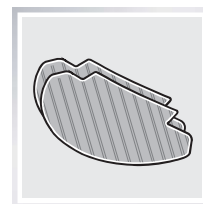
(4) Side Brushes



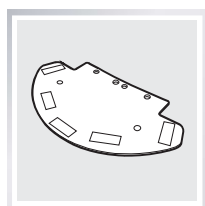
Main Brush Option
(Pre-installed)



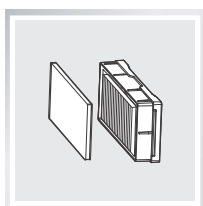
Reservoir



(2) Washable/
Reusable Microfiber
Cleaning Cloths



Cleaning Cloth Plate



Sponge Filter and
High Efficiency Filter

2.2 Specifications

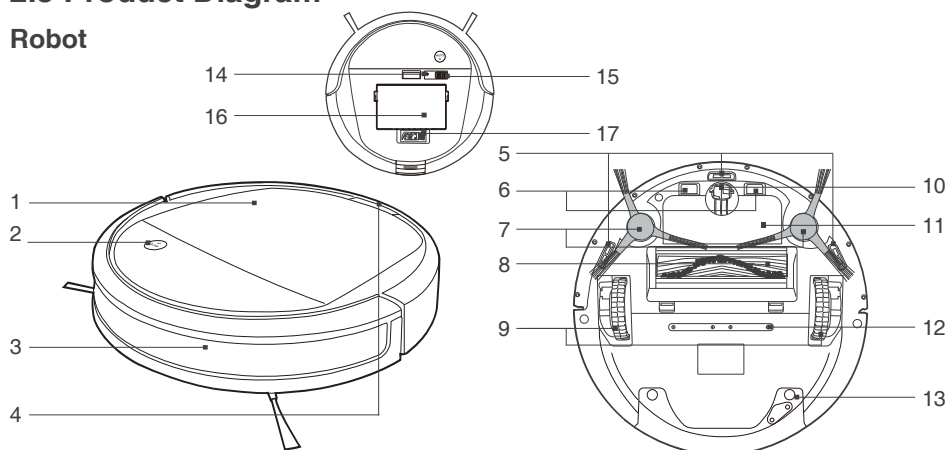
Model	DD3G		
Working Voltage	12V DC	Rated Power	40W
Charging Dock Model	CH1465A		
Rated Input Voltage	100-240V AC	Rated power	20W
Rated Output Current	1A	Rated output voltage	20V DC
Remote Control Model	RC1633	Input Voltage	3V DC
Battery	DM88-BYD Ni-MH3000mAh 12V		

* Technical and design specifications may be changed in the course of continuous product improvement.

2. Package Contents and Technical Specifications

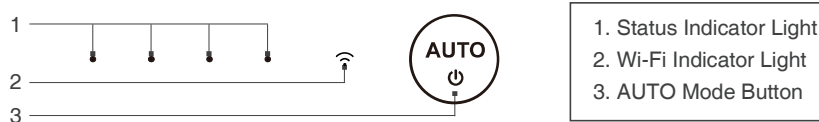
2.3 Product Diagram

Robot



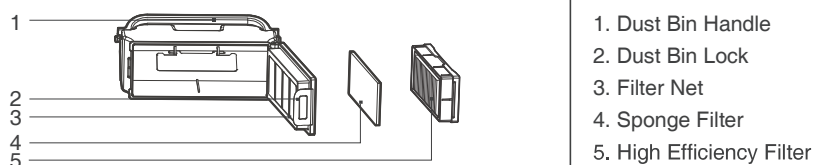
- | | | |
|---------------------------------------|----------------------|----------------------------------|
| 1. Cover | 7. Side Brushes | 14. RESET Button |
| 2. AUTO Mode Button | 8. Main Brush Option | 15. Power Switch |
| 3. Bumper with Anti-Collision Sensors | 9. Driving Wheels | 16. Dust Bin |
| 4. Reservoir Release Button | 10. Universal Wheel | 17. Multi-Function Cleaning Tool |
| 5. Anti-Drop Sensors | 11. Battery Pack | |
| 6. Charging Contacts | 12. Water Outlets | |
| | 13. Reservoir | |

Control Panel



- | |
|---------------------------|
| 1. Status Indicator Light |
| 2. Wi-Fi Indicator Light |
| 3. AUTO Mode Button |

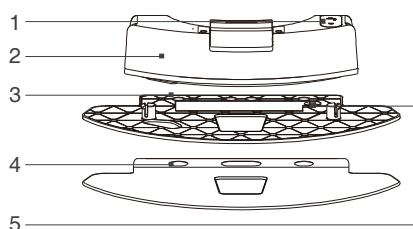
Dust Bin



- | |
|---------------------------|
| 1. Dust Bin Handle |
| 2. Dust Bin Lock |
| 3. Filter Net |
| 4. Sponge Filter |
| 5. High Efficiency Filter |

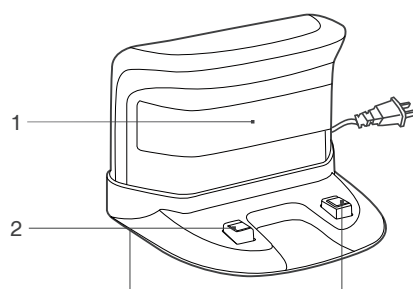
2. Package Contents and Technical Specifications

Advanced Mopping System



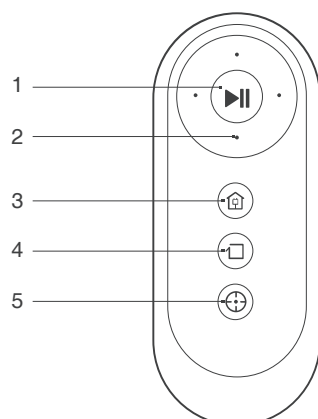
1. Water Inlet
2. Reservoir
3. Cleaning Cloth Plate
4. Washable/Reusable Microfiber Cleaning Cloth
5. Magnet

Charging Dock



1. Infrared Signal Generator
2. Charging Dock Pins

Charging Dock



1. START/PAUSE Button
2. Direction Control Buttons
3. Return to Charger Mode Button
4. Edge Cleaning Mode Button
5. Spot Cleaning Mode Button

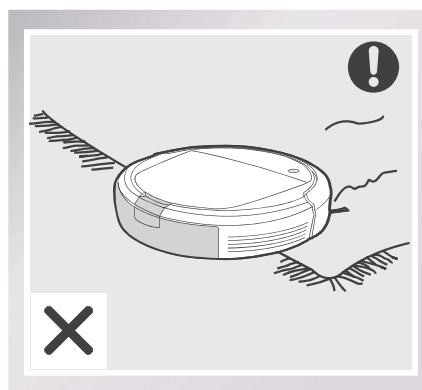
3. Operating and Programming

3.1 Notes Before Cleaning

Before operating DEEBOT, take a few moments to survey the area to be cleaned and remove any obstacles.



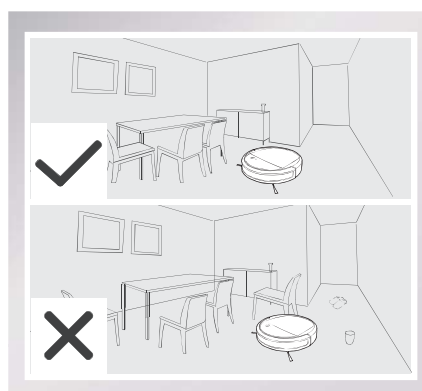
Please take care of DEEBOT and assist it at its first time of cleaning.



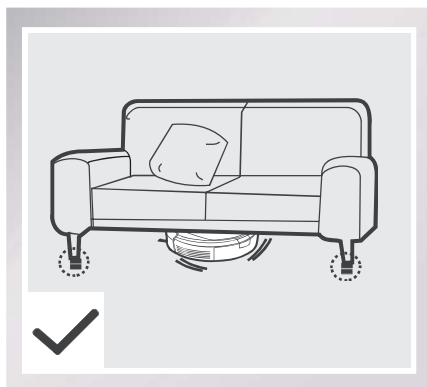
The product is not suitable for use on carpet. Before using the product near an area rug or on a short-pile area rug with tasseled edges, please fold area rug edges under themselves.



Remove power cords and small objects from the floor that could entangle the product, and tidy up the cleaning area to put furniture like chairs in their proper place.

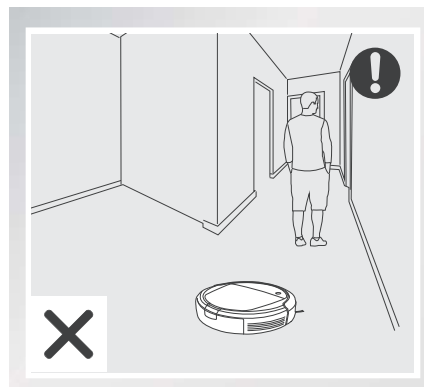


3. Operating and Programming

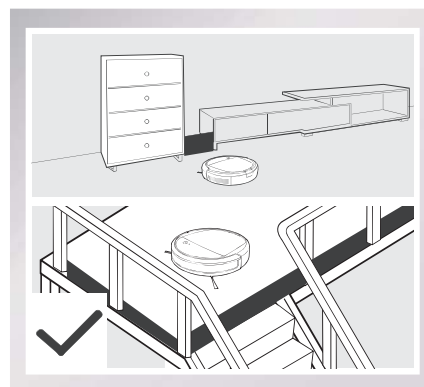


Please be aware that the robot needs at least an 8 cm (3.1") clearance to clean under furniture without complications.

If there is a step or stairs in the cleaning area, please operate DEEBOT to ensure its Anti-Drop Sensors can detect the drop off. It may be necessary to place a physical barrier at the edge of the drop off to keep the unit from falling over the edge.

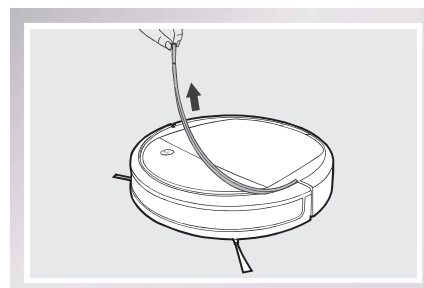


Please do not stand in narrow spaces, such as hallways, or DEEBOT may fail to identify the area to be cleaned.



3.2 Quick Start

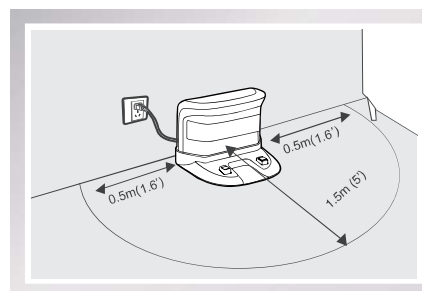
- * Remove the protective strip from the robot's Bumper before use.



3. Operating and Programming

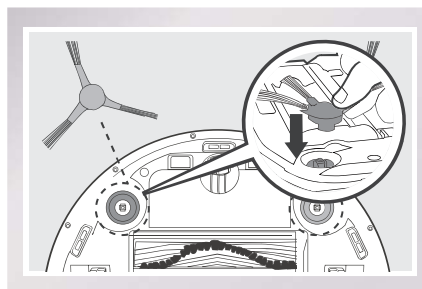
1 Charging Dock Placement

- Place the Charging Dock on a level floor surface against the wall with the base perpendicular to the ground. Keep the immediate area 1.5m (5') in front of the charger and 0.5m (1.6') on both sides of the charger clear of objects and reflective object surfaces.
- Plug the Charging Dock in.



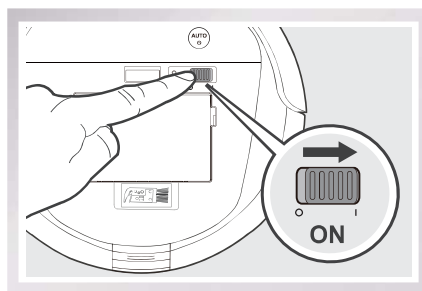
2 Install Side Brushes

- Attach Side Brushes to the bottom of DEEBOT by pressing a brush into each slot with the matching color until it clicks.



3 Power ON

- Open the robot's Top Cover. Turn the robot's Power Switch to the ON position. DEEBOT is powered ON when DEEBOT emits a musical sound and the AUTO Mode Button stays illuminated.

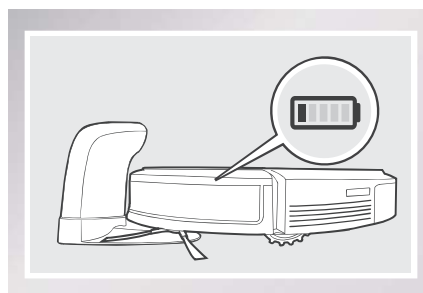


* When DEEBOT is not cleaning, it is suggested to keep it powered ON and charging instead of powered OFF.

3. Operating and Programming

4 Charge DEEBOT

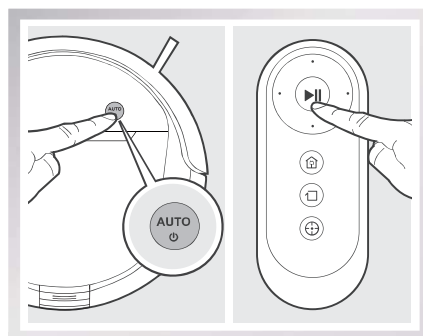
- Place DEEBOT on the Charging Dock making sure the Charging Contacts on DEEBOT and the Charging Dock Pins make a connection.
- Charge DEEBOT for at least 4 hours before the first use.



- * Make sure to turn the robot's Power Switch to the ON position before charging.
- * AUTO Mode Button blinks when DEEBOT is charging. AUTO Mode Button stops glowing when DEEBOT is fully charged.
- * When DEEBOT completes the cleaning cycle or when battery power gets low, DEEBOT automatically returns to the Charging Dock to recharge itself. DEEBOT can also be sent back to the Charging Dock at any time by pressing the Return to Charger Button on the Remote Control.
- * Empty any remaining water from the Reservoir and remove the Cleaning Cloth Plate before charging DEEBOT.

5 Start

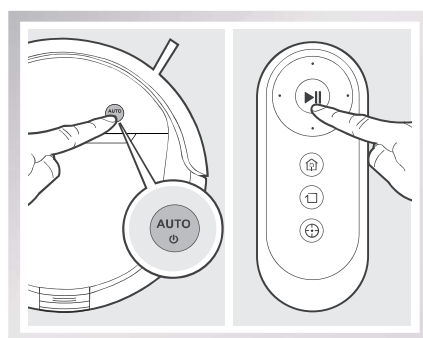
- Press the AUTO Mode Button on DEEBOT or ► on the Remote Control. DEEBOT starts to work immediately in AUTO Cleaning Mode.



6 Pause

- Pause DEEBOT by pressing the AUTO Mode Button on DEEBOT or ► on the Remote Control.

- * DEEBOT can be directed to move forward, backward, left and right using the Direction Control Buttons on the Remote Control when it is Paused.
- * The AUTO Mode Button on the robot's Control Panel stops glowing after the robot is paused for more than 10 minutes. Press AUTO Mode Button on the robot or press any button on the Remote Control to wake up the robot.

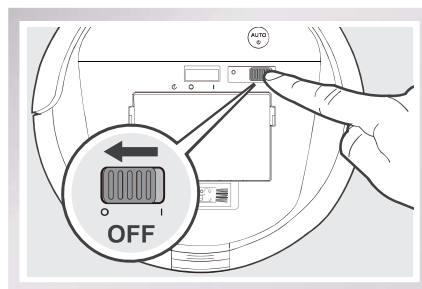


3. Operating and Programming

7 Power OFF

- Pause DEEBOT. Open the robot's Top Cover. Move the Power Switch to the OFF position.

* When DEEBOT is not cleaning, it is suggested to keep it powered ON and charging.

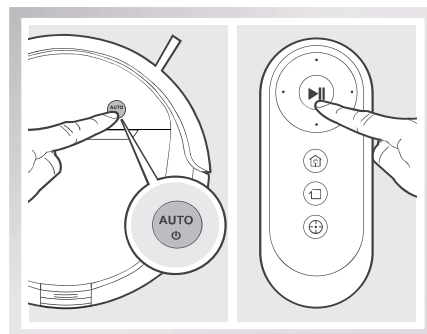


3.3 Cleaning Mode Selection

DEEBOT has several cleaning modes to choose from to effectively clean different floors. Cleaning modes are selected using the Remote Control or ECOVACS App.

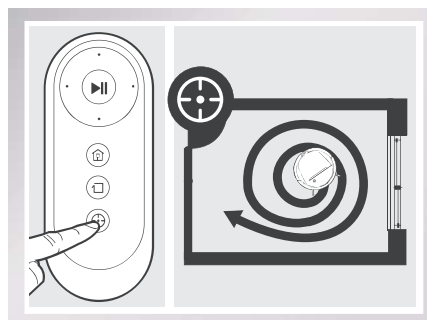
1 AUTO Cleaning Mode

This is the most commonly used mode. In AUTO Cleaning Mode, DEEBOT plans the most efficient route and cleans in a back and forth straight-line pattern.



2 Spot Cleaning Mode (1-5 minutes)

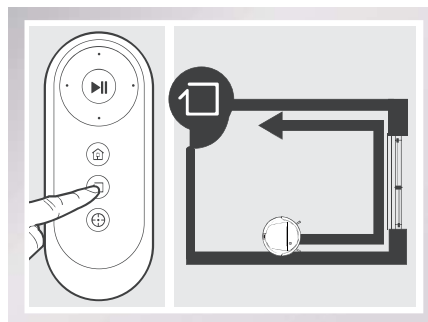
This mode is applicable for an area of highly concentrated dirt or dust. In Spot Cleaning Mode, DEEBOT focuses on a specific area to clean.



3. Operating and Programming

3 Edge Cleaning Mode

This mode is good for cleaning the edges and corners of a room. In Edge Cleaning Mode, DEEBOT cleans along a border (e.g. wall).



3.4 Programming the Robot

DEEBOT has an **Intelligent Scheduling** and a **Time Scheduling** function to schedule cleaning times. DEEBOT can be programmed to automatically clean with Intelligent Scheduling using the robot's Control Panel. DEEBOT can also be programmed with Time Scheduling using the App.

* All scheduled cleanings are performed in AUTO Cleaning Mode.

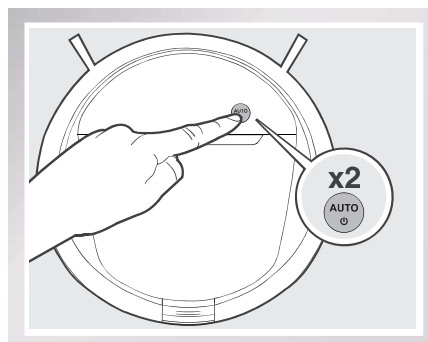
Intelligent Scheduling

1 Set Intelligent Scheduling

DEEBOT can be scheduled to cleaning once per day at the same time, even if nobody is at home.

Double-click the AUTO Mode Button on DEEBOT to set the current time as the scheduled cleaning time. Intelligent Scheduling is set when the robot beeps. DEEBOT will automatically clean at the set time every day.

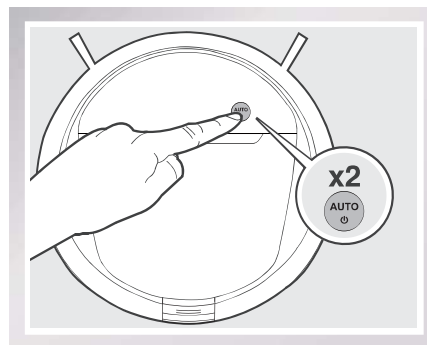
For example: Set Intelligent Scheduling successfully at 9:00am, and DEEBOT automatically cleans at 9:00am every day.



3. Operating and Programming

2 Cancel Intelligent Scheduling

Double-Click the AUTO Mode Button on DEEBOT when DEEBOT is paused. Intelligent Scheduling is cancelled when the robot beeps.



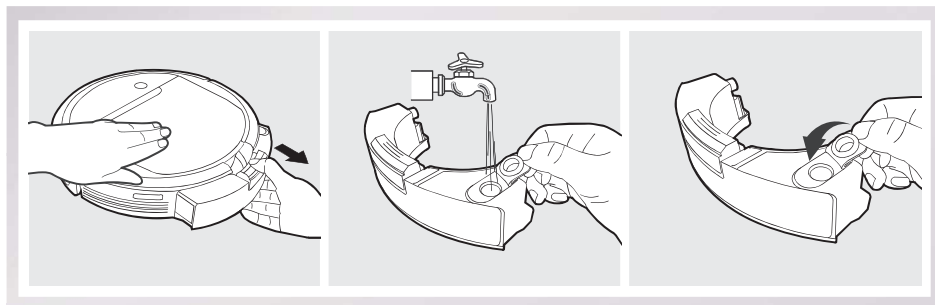
- * To automatically clean at another time, first cancel the current Intelligent Scheduling, then set Intelligent Scheduling again at the desired time.
- * If DEEBOT is turned OFF, Intelligent Scheduling is cancelled.

3.5 Optional Mopping System

DEEBOT has an optional Mopping System using a Washable/Reusable Microfiber Cleaning Cloth and Cleaning Cloth Plate attached to a proprietary Reservoir. The washable/reusable Cleaning Cloth automatically damp mops the floor to a spotless clean.

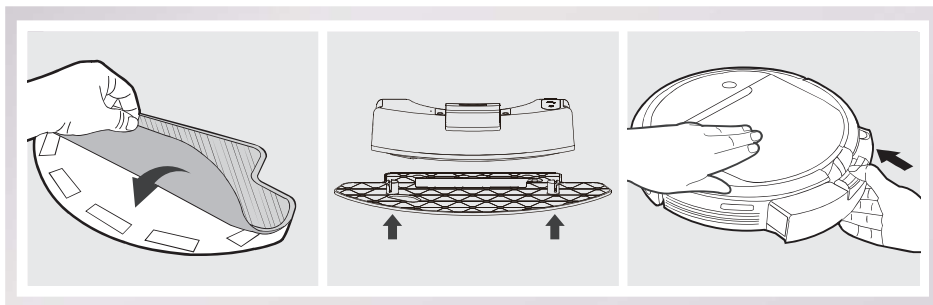
- * Empty the Reservoir and remove the Cleaning Cloth Plate before cleaning on carpet.
- * When using the mopping system, fold area rug edges under themselves so DEEBOT will avoid the rug.
- * After DEEBOT finishes mopping, empty any remaining water from the Reservoir.
- * Empty any remaining water from the Reservoir and remove the Cleaning Cloth Plate before charging DEEBOT.
- * Always keep the Reservoir installed when the robot is cleaning or charging.

1 Add Water into the Reservoir.



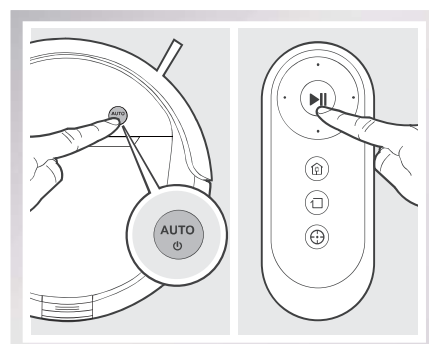
3. Operating and Programming

2 Attach Cleaning Cloth; Install the Cleaning Cloth Plate and the Reservoir.



3 Start

Select the desired Cleaning Mode. DEEBOT sweeps, lifts, vacuums and mops in the selected mode.





3. Operating and Programming

3.6 Alarm Indicator and Sounds

If DEEBOT detects a problem and needs your assistance, it emits alarm beeps or the Status Indicator Light illuminates.

Alarm Sound	Indicator Light	Problems	Solution
/	Status Indicator Light flashes twice and goes out once DEEBOT is powered ON.	DEEBOT has low battery.	Power ON the robot. Manually place the robot on the Charging Dock and charge.
One Beep	Status Indicator Light flashes RED.	Driving Wheel Malfunction	Check Driving Wheels for tangled hair or debris and clean.
Two Beeps	Status Indicator Light flashes RED.	Main Brush Malfunction	Check Main Brush for tangled hair or debris and clean.
Three Beeps	Status Indicator Light flashes RED.	Driving Wheel Malfunction	Turn over the robot. Press Driving Wheels to check for a clicking sound. If they do not click, please contact Customer Service.
		DEEBOT gets into trouble while working and stops.	Manually remove the obstacles and restart DEEBOT.
Four Beeps	Status Indicator Light flashes RED.	Dust Bin Malfunction	Remove the Dust Bin and re-install it properly. If the robot still emits the alarm, please contact Customer Service.
Five Beeps	Status Indicator Light flashes RED.	Low Battery	Manually place the robot on the Charging Dock to charge.
Six Beeps	Status Indicator Light flashes RED.	Side Brush Malfunction	Check Side Brush for tangled hair or debris and clean.
Seven Beeps	Status Indicator Light flashes RED.	Anti-Drop Sensor Malfunction	Check Anti-Drop Sensors for dust and clean.
Eight Beeps	Status Indicator Light flashes RED.	DEEBOT is powered OFF while charging.	Power ON the robot.

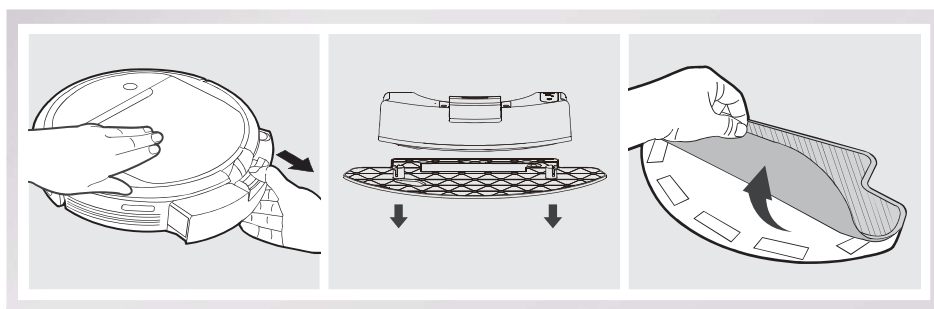
4. Maintenance

Before performing cleaning and maintenance, power OFF DEEBOT and unplug the Charging Dock.

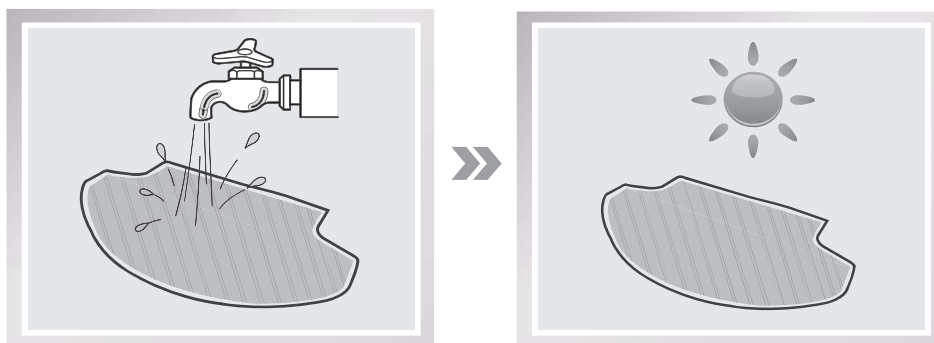
4.1 Mopping System

After DEEBOT finishes mopping, remove the Reservoir from DEEBOT, and maintain the Reservoir, the Cleaning Cloth and the Cleaning Cloth Plate immediately.

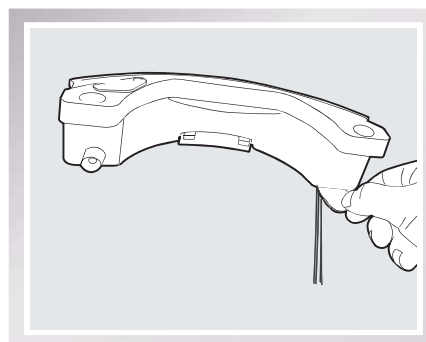
Press the Release Button and pull to remove the Reservoir. Remove the Cleaning Cloth Plate and the Cleaning Cloth.



Wash the Cleaning Cloth and lay flat to dry.

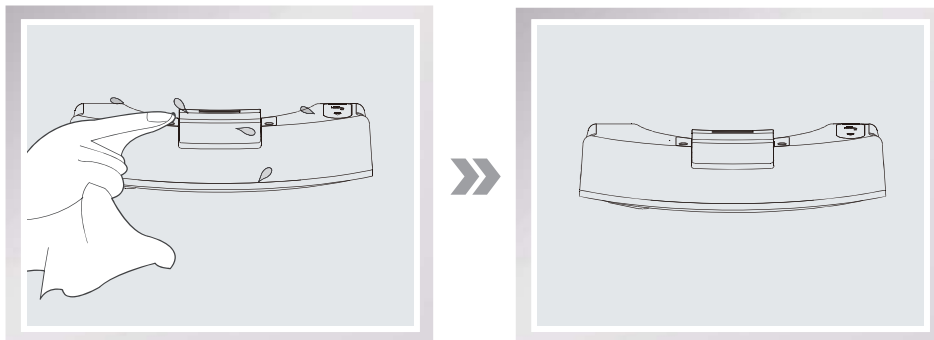


Empty any remaining water from the Reservoir.



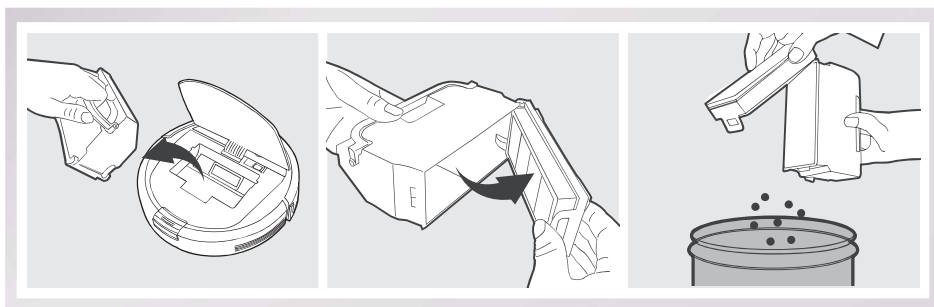
4. Maintenance

Wipe the outside of the Reservoir with a dry cloth and lay flat to dry. Avoid direct sunlight.

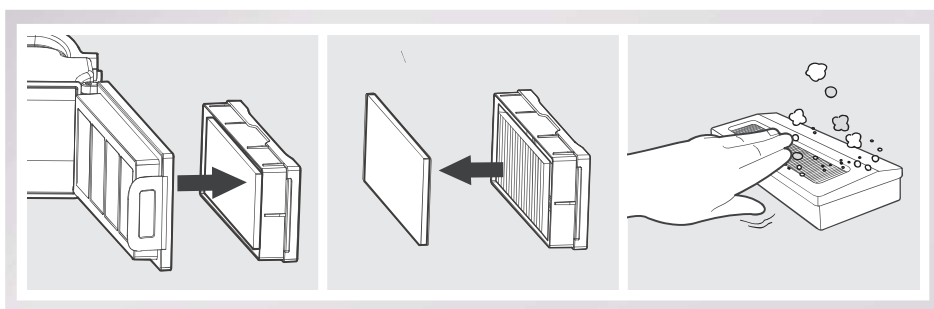


4.2 Dust Bin and Filters

Open the robot's Top Cover and remove the Dust Bin. Open the Dust Bin Cover and empty the Dust Bin.

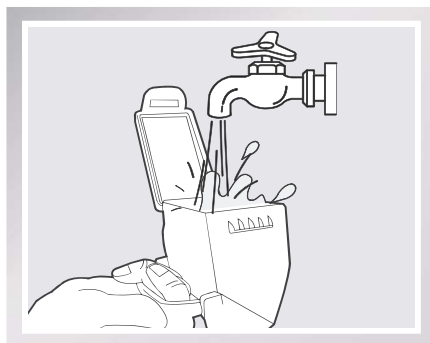


Remove the filters. Pat the High Efficiency clean. Do not rinse the High Efficiency Filter under water.

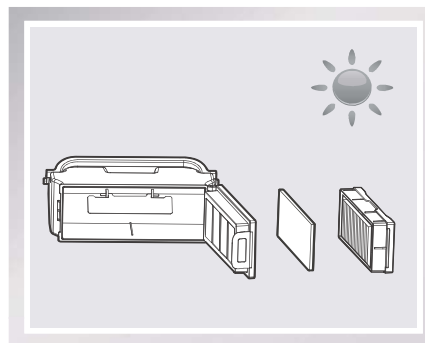


4. Maintenance

Rinse the Sponge Filter, Dust Bin and Filter Net under running water.



Dry the Dust Bin and filters completely before reinstalling.

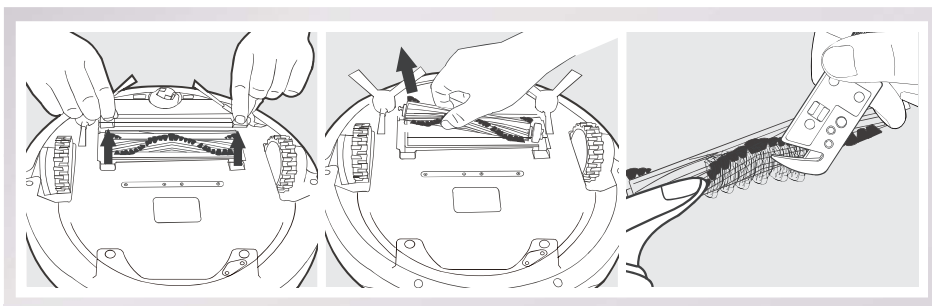


4.3 Main Brush and Side Brushes

* A Multi-Function Cleaning Tool is provided for easy maintenance. Handle with care, this cleaning tool has sharp edges.

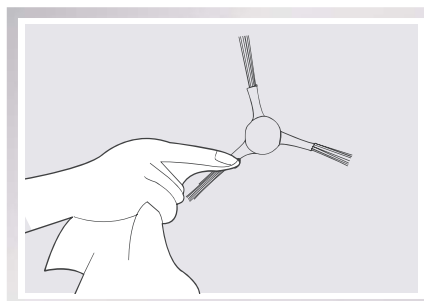
Main Brush

Turn the robot over. Push both buttons on the Main Brush Option and remove the Main Brush cover. Remove the Main Brush. Use the Multi-Function Cleaning Tool to cut off and remove any hair tangled around the Main Brush. Clean any tangled hair or debris from the Main Brush.



Cleaning the Side Brushes

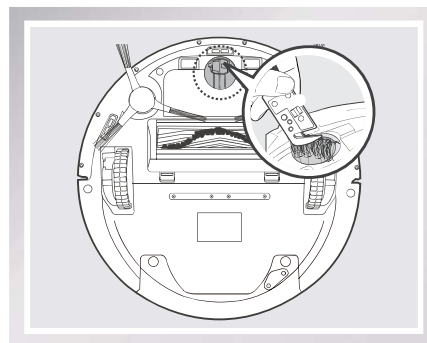
Remove any hair or debris tangled around the Side Brushes with the provided Multi-Function Cleaning Tool. Remove the Side Brushes and wipe the Side Brushes and their slots with a clean cloth.



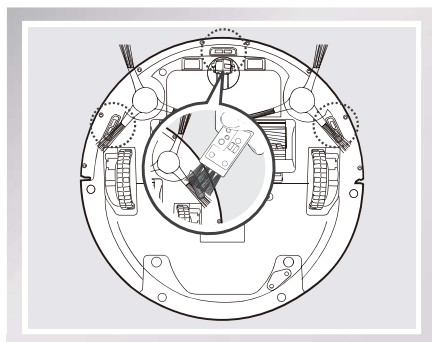
4. Maintenance

4.4 Other Components

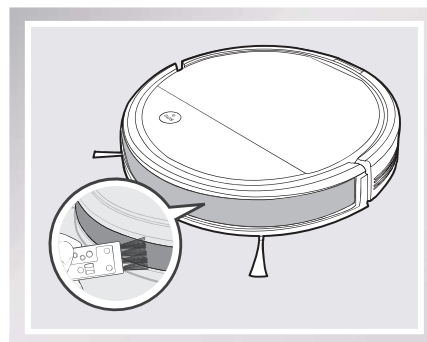
Use the Multi-Function Cleaning Tool to cut off and remove any hair tangled around the Universal Wheel.



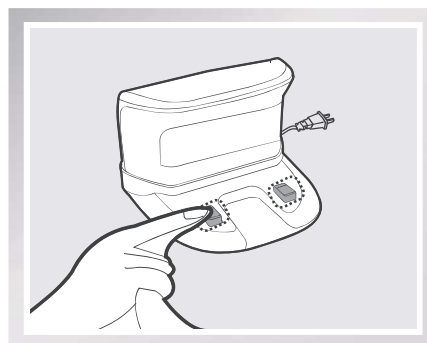
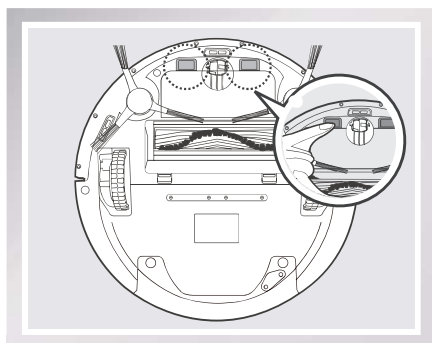
Wipe the Anti-Drop Sensors with the brush of the Multi-Function Cleaning Tool to maintain their effectiveness.



Wipe the Bumper with the brush of the Multi-Function Cleaning Tool.



Wipe the robot's Charging Contacts and Charging Docks Pins with a dry cloth to maintain their effectiveness.





4. Maintenance

4.5 Regular Maintenance

To keep DEEBOT running at peak performance, perform the maintenance and replacement according to the following frequency. A Multi-Function Cleaning Tool is provided for easy maintenance. Handle with care, this cleaning tool has sharp edges.

Robot Part	Maintenance Frequency	Replacement Frequency
Cleaning Cloth	After each use	Every 50 washings
Dust Bin/Reservoir/ Cleaning Cloth Plate	After each use	/
Side brush	Once every 2 weeks	Every 3-6 months
Main Brush	Once per week	Every 6-12 months
Sponge Filter/ High Efficiency Filter	Once per week (twice per week with pets in home)	Every 4-6 months
Universal Wheel Anti-Drop Sensors Bumper Charging Contacts Charging Dock Pins	Once per week	/

Note: ECOVACS manufactures various replacement parts and assemblies. Please contact Customer Service for more information on replacement parts.



5. Troubleshooting

Please use this chart to troubleshoot common problems using DEEBOT.

No.	Malfunction	Possible Causes	Solutions
1	DEEBOT will not charge.	DEEBOT is not powered ON.	Move the robot's Power Switch to the ON position.
		DEEBOT has not made a connection with the Charging Dock.	Be sure that the robot's Charging Contacts have made a connection with the Charging Dock Pins. You may move the robot manually to make the connection if necessary.
		Charging Dock is unplugged while DEEBOT is powered ON, which causes battery consumption.	Plug in the Charging Dock and ensure DEEBOT is powered ON. Keep DEEBOT on the Charging Dock to make sure it has full battery to work at any time.
		The battery is completely discharged.	Re-activate the battery. Place DEEBOT on the Charging Dock by hand, remove after charging for 3 minutes, repeat 3 times; then charge normally.
2	DEEBOT cannot return to the Charging Dock.	The Charging Dock is not placed properly.	Refer to section 3.2 to place the Charging Dock properly.
3	DEEBOT gets into trouble while working and stops.	DEEBOT is tangled with something on the floor (electrical cords, drooping curtains, area rug fringe etc.).	DEEBOT will try various ways to get itself out of trouble. If it is unsuccessful, check the Side Brushes and remove anything tangled around the Side Brushes, or manually remove the obstacles and restart.
4	DEEBOT returns to the Charging Dock before it finishes cleaning.	When battery power gets low, DEEBOT automatically switches to Return to Charger Mode and returns to the Charging Dock to recharge itself.	This is normal. No solution necessary.
		Working time varies according to floor surface, room complexity and the selected Cleaning Mode.	This is normal. No solution necessary.



5. Troubleshooting

No.	Malfunction	Possible Causes	Solutions
5	DEEBOT will not clean automatically at scheduled time.	Intelligent Scheduling or Time Scheduling function is cancelled.	Please refer to section 3.4 for details.
		DEEBOT is powered OFF.	Power ON DEEBOT.
		The robot's battery is low.	Keep DEEBOT powered ON and on the Charging Dock to make sure it has full battery to work at any time.
		The robot's Suction Intake is blocked and/or its components are tangled with debris.	Turn the robot's power OFF, clean the Dust Bin and invert the robot. Clean the robot's Suction Intake and Side Brushes.
6	DEEBOT misses cleaning area.	The cleaning area needs tidying up.	Please remove small objects from the floor, and tidy up the cleaning area before DEEBOT starts cleaning.
7	Remote Control failure (effective control range of Remote Control is 5m (16')).	The batteries in the Remote Control need to be replaced.	Replace with new batteries making sure they are installed correctly.
		DEEBOT is powered OFF or the robot's battery is low.	Make sure DEEBOT is powered ON and fully charged.
		The infrared signal cannot be transmitted because the Infrared Emitter on Remote Control or the Infrared Receiver on DEEBOT is dirty.	Use clean dry cloth to wipe the Infrared Emitter on Remote Control and the Infrared Receiver on DEEBOT.
		There is other equipment interfering with the infrared signal to DEEBOT.	Avoid using the Remote Control near other equipment using infrared signals.
8	The water is not coming out of the Reservoir when DEEBOT is mopping.	The Magnet on the Cleaning Cloth Plate comes off.	Please contact Customer Service.
		The Reservoir runs out of water.	Add water into the Reservoir.
		The water outlets on the bottom of DEEBOT are clogged.	Check the water outlets on the bottom and clean.